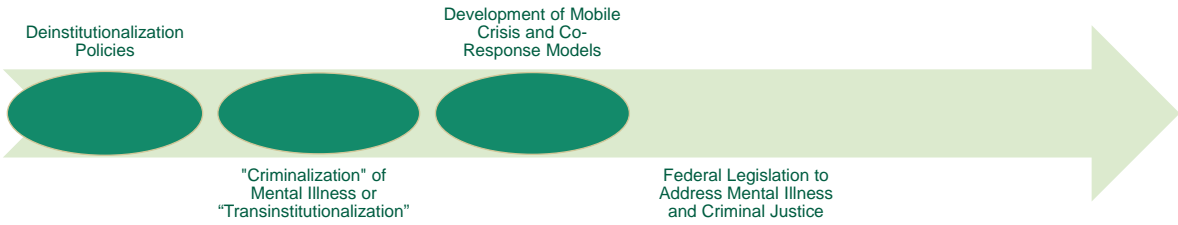


POLICE MENTAL HEALTH CO-RESPONDER
PROGRAMS IN FLORIDA: CONSIDERATIONS FOR
DIFFERENT MODELS

Anna Abella, PhD & Monica Landers, MA, MSW

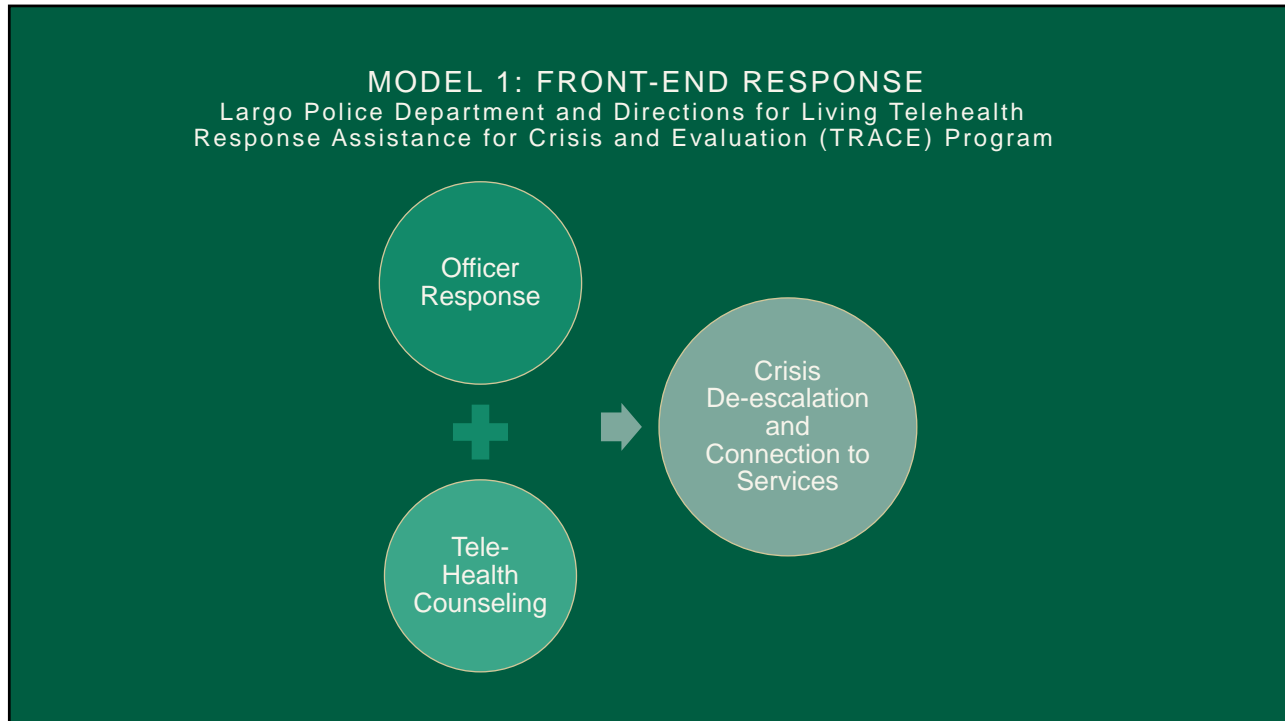


KEY HISTORICAL MOMENTS

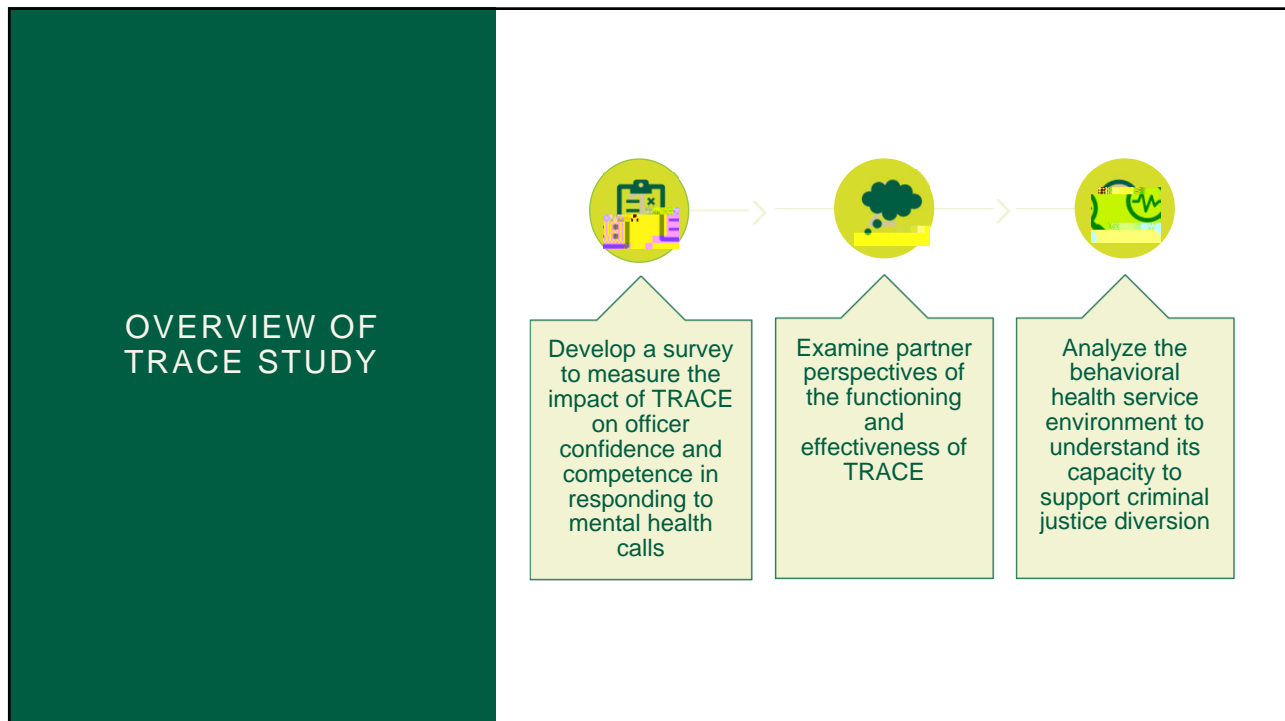
EFFORTS TO

Outcome	Evidence for Effectiveness
Connection to Services	Mixed

WHAT DOES THE LITERATURE SAY?



9



10



**PCSO MHU/
PIC TEAM
OUTCOMES**

- 41.5% decrease in arrests (short-term)
- 10% decrease in arrests after an entire year
- 44.4% decrease in Baker Act exams
- 44% improved in substance use; 42% improved in mental health
- FARS: 62.3% improved Disability; 71% Emotionality; 73% Relationships; 62% Personal Safety

13



14

CONSIDERATIONS FOR PROGRAM DESIGNS

At which point(s) should an intervention be focused?

- During crisis, follow-up, long-term

How do models build in system coordination and collaboration?

- Co-located staff, formal partnerships, collaborative decision making

What strategies may help with engagement?

- Mental health specialist, system navigation, case management, peer specialists

What data elements are needed for comprehensively assessing outcomes?

- Ability to coordinate data systems, identification of target outcomes, understanding of baseline patterns

How will the program be sustainable?

- Government/foundation grants, agency funding, policy and system-wide changes

15



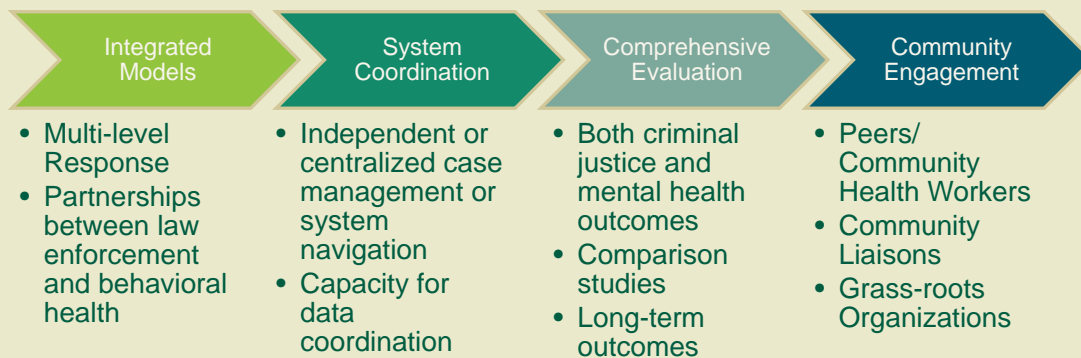
16

BEST PRACTICES FOR IMPLEMENTATION

- Establishing Readiness
 - Having shared vision for target population and goals
 - Using racial equity lens to assess/ensure representation
 - Formalizing agreements among partners
 - Determining decision-makers and involvement of other stakeholders
 - Ensuring data systems have capacity to measure impact
 - Continuous identification of funding from the beginning
 - Identifying long-term plans for change

17

FUTURE DIRECTIONS FOR INTERVENTIONS



18

RESOURCES

Bureau of Justice Administration Police-Mental Health Collaboration Toolkit: <https://bja.ojp.gov/program/pmhcgcov4e>

Mental Health America Position Statement on Responding to Behavioral Health Crises: <https://mhanational.org/issues/position-statement-59-responding-behavioral-health-crises>

BJA Justice and Mental Health Collaboration Program Funding: <https://bja.ojp.gov/program/justice-and-mental-health-collaboration-program-jmhcp/funding>

National Implementation Research Network Implementation Stages Planning Tool: <https://nirn.fpg.unc.edu/sites/nirn.fpg.unc.edu/files/resources/Implementation%20Stages%20Planning%20Tool%20v8%20NIRN%20only%20Fillable.pdf>

National Implementation Research Network Hexagon Tool: https://nirn.fpg.unc.edu/sites/nirn.fpg.unc.edu/files/imce/documents/NIRN%20Hexagon%20Discussion%20Analysis%20Tool_September2020_1.pdf

Crisis Intervention Team International: <https://www.citinternational.org/Learn-About-CIT>

19

REFERENCES

- Abramson, M. F. The criminalization of mentally disordered behavior: Possible side-effect of a new mental health law. *Psychiatric Services*. 1972;23(4):101-105.
- Borum, R., Deane, M. W., Steadman, H. J., et al. Police perspectives on responding to mentally ill people in crisis: Perceptions of program effectiveness. *Behavioral Sciences & the Law*. 1998;16(4): 393-405.
- Bureau of Justice Assistance (BJA). Police-Mental Health Collaboration. US Dept of Justice, Office of Justice Programs, & United States of America; 2018.
- Epperson, M. W., Wolff, N., Morgan, R. D., et al. Envisioning the next generation of behavioral health and criminal justice interventions. *International Journal of Law and Psychiatry*. 2014;37(5): 427-438.
- Lamb, H. R., & Weinberger, L. E. Persons with severe mental illness in jails and prisons: A review. *Psychiatric Services*. 1998;49(4): 483-492.
- Lurigio, A. J. Persons with serious mental illness in the criminal justice system: Background, prevalence, and principles of care. *Criminal Justice Policy Review*. 2000;11(4): 312-328.
- Martin, M. S., Dorken, S. K., Wamboldt, A. D., et al. Stopping the revolving door: A meta-analysis on the effectiveness of interventions for criminally involved individuals with major mental disorders. *Law and Human Behavior*. 2011;36(1): 1-15.
- Parker, A., Scantlebury, A., Booth, A., et al. Interagency collaboration models for people with mental ill health in contact with the police: a systematic scoping review. *BMJ Open*. 2018;8(3):e019312.
- Peterson, J., & Densely, J. Is crisis intervention team (CIT) training evidence-based practice? A systematic review. *Journal of Crime and Justice*. 2018;41(5):521-534.
- Prins, S. J. Prevalence of mental illnesses in US state prisons: A systematic review. *Psychiatric Services*. 2014;65(7):862-872.
- Steadman, H. J., Osher, F. C., Robbins, P. C., et al. Prevalence of serious mental illness among jail inmates. *Psychiatric Services*. 2009;60(6):761-765.
- Teplin, L. A. Criminalizing mental disorder: The comparative arrest rates of the mentally ill. *American Psychologist*. 1984;39(7):794-803.
- Wood, J. D., & Watson, A. C. Improving police interventions during mental health-related encounters: Past, present and future. *Policing & Society*. 2017;27:289-299.
- Wood, J. D., Watson, A. C., & Barber, C. What can we expect of police in the face of deficient mental health systems? Qualitative insights from Chicago police officers. *Journal of Psychiatric and Mental Health Nursing* 2021;28(1):28-42.

20

THANK YOU!

Anna Abella
aldavids@usf.edu

Monica Landers
mdlancer@usf.edu